

EPIC® CONNECTORS

HD Series

The HD series inserts are designed for use in industries where a large numbers of contacts are required. These crimp inserts are available with stamped and formed or machine contacts. These inserts fit into the HA and HBE Series housings which are standard with fixed levers.



HD 7 Series	365
HD 8 Series	367
HD 15 Series	369
HD 25 Series	372
HD 40 Series	375
HD 50 Series	380
HD 64 Series	384
HD 80 Series	389
HD 128 Series	392

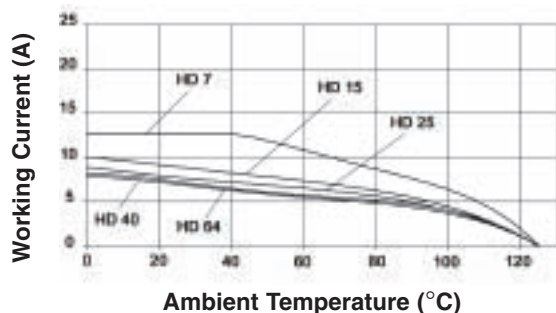


TECHNICAL DATA

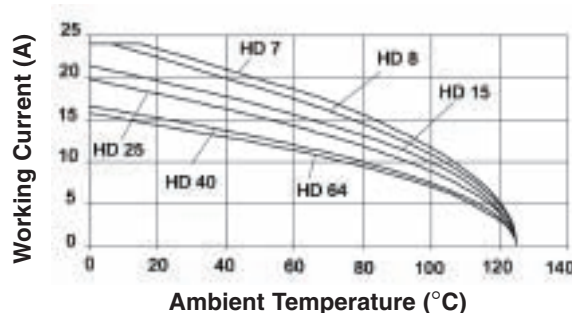
Number of Contacts: 7, 8, 15, 25, 40, 50, 64, 80, 128(+PE)	Termination Type: Crimp termination:
Rated Voltage: VDE: 42V (Metal Housing) 250V (Plastic Housing) EPIC HD 7 - 8 250V EPIC HD 15 - 128	0.14 - 2.5 mm ² AWG: 22 - 14
UL: 600V EPIC HD 7 - 128	Temperature Range: -40°C to 125°C
Rated Current: VDE: 10A EPIC HD 7 - 128	Contacts: Copper alloy, silver plated/ gold plated
UL: 10A EPIC HD 7 - 128	Contact Resistance: <2mOhm <3mOhm for HD 40/ 64/ 80/ 128 for Machined Contacts
Pollution Level: 3	Mating Cycles: 100 (higher mating cycles depends on the application)
Test Voltage: 2 kV 2.5 kV for HD 40/ 64/ 80/ 128 for Machined Contacts	

HD INSERTS: DERATING CURVES

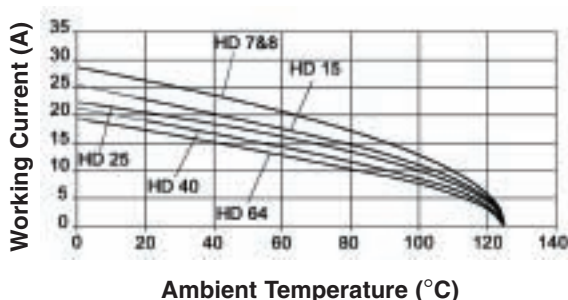
**HD STAMPED & FORMED:
0.5 mm² (20 AWG)**



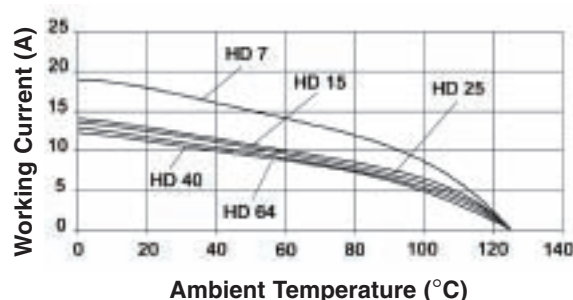
**HD CRIMP MACHINE:
1.5 mm² (16 AWG)**



**HD CRIMP MACHINE:
2.5 mm² (14 AWG)**



**HD STAMPED & FORMED:
1.5 mm² (16 AWG)**

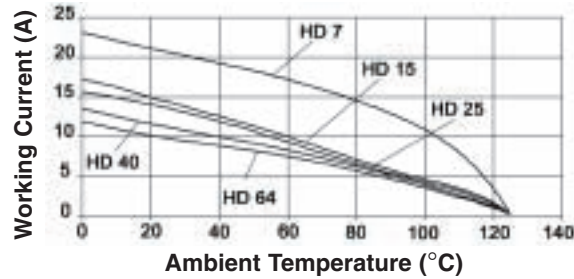


EPIC[®] CONNECTORS

HD Series

HD INSERTS: DERATING CURVES

HD STAMPED & FORMED:
2.5 mm² (14 AWG)



MATING COMPONENTS

HD Plugs & Receptacles fit into EPIC[®] HA or HBE Housings. A quick reference for the mating components is shown. Diagrams are located in the HA or HBE Section of the catalog. Please note that metric parts are available.

Specifications: DIN 43652
Temperature Range: -40°C to +125°C

Protection class: IP65
Material: Aluminum alloy, powder coated

Standard Grey Coating (NEMA 4)

EP Black Coating (NEMA 4X)

PG

NPT

METRIC

PG

NPT

METRIC

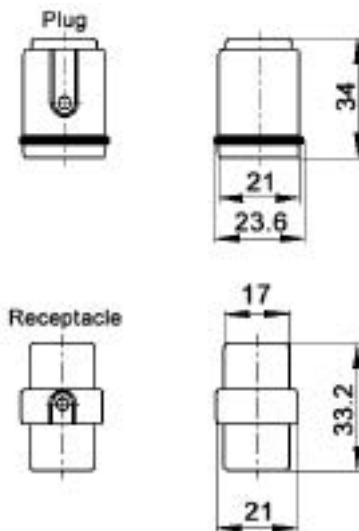


EPIC® CONNECTORS

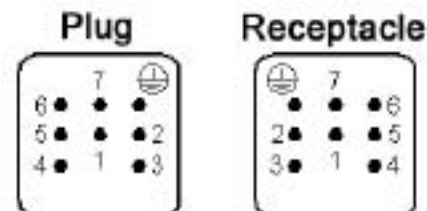
HD 7 Plugs & Receptacles



CRIMP TERMINATED: MACHINE CONTACT INSERTS



View from Cable Side

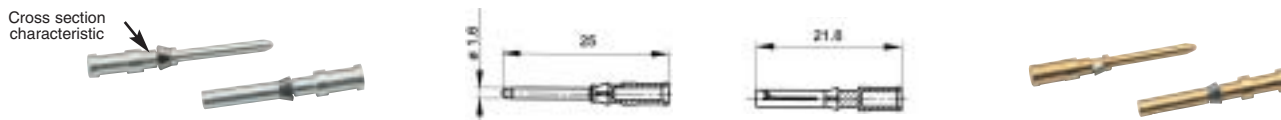


All dimensions are in mm.

Plug	Receptacle
11.2505	11.2515

Contacts Sold Separately

MACHINE CONTACTS: DIAMETER 1.6 MM



Bags of 100

mm ²	AWG	Silver		Gold		Stripping Length (mm)	Cross Section Characteristic
		Pin	Socket	Pin	Socket		
0.14 - 0.37	26 - 22	13.1620	13.1630	13.1625	13.1635	8	1
0.5	20	13.1621	13.1631	13.1626	13.1636	8	2
0.75 - 1.0	18	13.1622	13.1632	13.1627	13.1637	8	3
1.5	16	13.1623	13.1633	13.1628	13.1638	8	4
2.5	14	13.1624	13.1634	13.1629	13.1639	5.8	5

Part number= 1 contact

CRIMP TOOLS



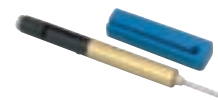
Crimp Tool
11.1470



Crimp Dies
11.1471



Locator
11.1472



Removal Tool
11.1610

FIBER OPTIC CONTACTS & TOOLS



Pin	Socket
11.2141	11.2191

Fiber Optic
Assembly Set
11.184700



EPIC® CONNECTORS

HD 7 Plugs & Receptacles



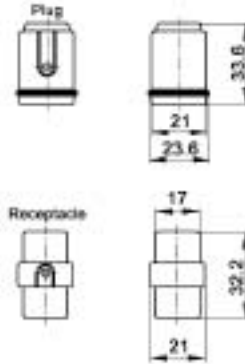
CRIMP TERMINATED: STAMPED & FORMED CONTACT INSERTS



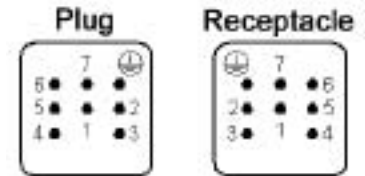
Contacts Sold Separately

Plug	Receptacle
11.2500	11.2510

Coding Pin 11.1620
Removal Tool: 11.1621T

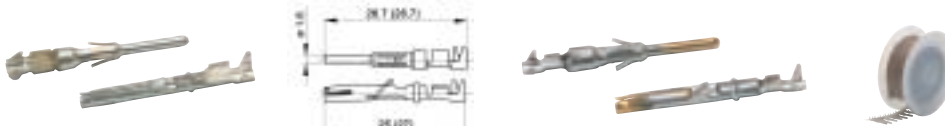


View from Cable Side



All dimensions are in mm.

STAMPED & FORMED CONTACTS: DIAMETER 1.6 MM



mm ²	Stripping Length (mm)
0.14 - 0.5	2.5 - 0.5
0.5 - 1.5	3.5 - 0.5
1.5 - 2.5	3.5 - 0.5

		Bags of 100				Silver: Left Hand Feed Reel			
mm ²	AWG	Silver		Gold		Reel of 100		Reel of 200	
		Pin	Socket	Pin	Socket	Pin	Socket	Pin	Socket
0.14 - 0.5	26 - 20	11.2411	11.2311	11.2431	11.2331	-	-	11.2407	11.2307
0.5 - 1.5	20 - 16	11.2210	11.2361	11.2213	11.2381	-	-	11.2207	11.2357
1.5 - 2.5	16 - 14	11.2235	11.2285	-	-	11.2230	11.2280	-	-

		Reel of 2000: Right Hand Feed				Reel of 2000: Left Hand Feed			
mm ²	AWG	Silver		Gold		Silver		Gold	
		Pin	Socket	Pin	Socket	Pin	Socket	Pin	Socket
0.14 - 0.5	26 - 20	11.2400	11.2300	-	-	11.2404	11.2304	11.2305	11.2405
0.5 - 1.5	20 - 16	11.2200	11.2350	11.2201	11.2352	11.2260	11.2265	-	-
1.5 - 2.5	16 - 14	-	-	-	-	11.2227	11.2277	-	-

Part number= 1 contact (bags) or 1 reel.

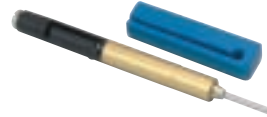
CRIMP TOOLS



Crimp Tool
11.1470



Locator
11.1473



Removal Tool: 11.1610



Crimp Tool for Reel
11.1535



Crimp Dies

0.14-0.5:	11.147170
0.5-1.5:	11.147180
1.5-2.5:	11.147190

Crimp Dies for Reel:

0.14-0.5:	11.1536
0.5-1.5:	11.1537
1.5-2.5:	11.1538



MATING COMPONENTS

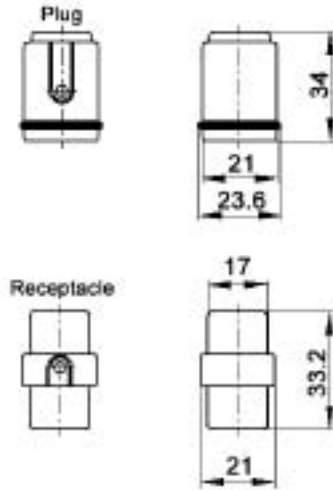
HD 7 Plugs & Receptacles fit into EPIC® HA 3/4 Housings. A quick reference for the mating components is shown. Diagrams are located in the HA Section of the catalog (Page 239). Please note that metric parts are available.

EPIC® CONNECTORS

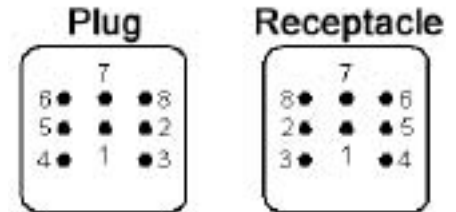
HD 8 Plugs & Receptacles



CRIMP TERMINATED: MACHINE CONTACT INSERTS



View from Cable Side



All dimensions are in mm.

Plug	Receptacle
11.2525	11.2535
Contacts Sold Separately	

MACHINE CONTACTS: DIAMETER 1.6 MM



Bags of 100

mm ²	AWG	Silver		Gold		Stripping Length (mm)	Cross Section Characteristic
		Pin	Socket	Pin	Socket		
0.14 - 0.37	26 - 22	13.1620	13.1630	13.1625	13.1635	8	1
0.5	20	13.1621	13.1631	13.1626	13.1636	8	2
0.75 - 1.0	18	13.1622	13.1632	13.1627	13.1637	8	3
1.5	16	13.1623	13.1633	13.1628	13.1638	8	4
2.5	14	13.1624	13.1634	13.1629	13.1639	5.8	5

Part number= 1 contact

CRIMP TOOLS



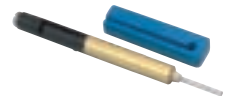
Crimp Tool
11.1470



Crimp Dies
11.1471



Locator
11.1472



Removal Tool
11.1610

FIBER OPTIC CONTACTS & TOOLS



Pin	Socket
11.2141	11.2191

Fiber Optic Assembly Set
11.184700



EPIC® CONNECTORS

HA 3/4 Housings: Single Lever on Base for HD 7/8 Inserts



HOODS



TOP ENTRY

Material	Size of Entry		Without Cable Gland	With Cable Gland
	PG	NPT	NPT Part #	PG Part #
Zinc Die Cast	11	1/2"	10.5121 NP	10.4265
Black Plastic	11	1/2"	10.4255 NP	10.4267
Grey Plastic	11	1/2"	10.4260 NP	10.4264

SIDE ENTRY

Material	Size of Entry		Without Cable Gland	With Cable Gland
	PG	NPT	NPT Part #	PG Part #
Zinc Die Cast	11	1/2"	10.5123 NP	10.4275
Black Plastic	11	1/2"	10.4273 NP	10.6206
Grey Plastic	11	1/2"	10.4270 NP	10.4271

PANEL MOUNT BASES

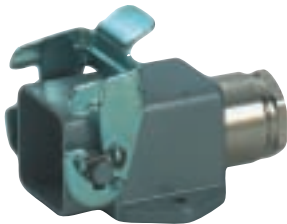


Grey Metal	
10.4225	
Black Plastic	Grey Plastic
10.4222	10.4220

Grey Metal	
10.4235	
Black Plastic	Grey Plastic
10.4231	10.4230



SURFACE MOUNT BASES



Material	Size of Entry		Without Cable Gland	With Cable Gland
	PG	NPT	NPT Part #	PG Part #
Zinc Die Cast	11	1/2"	10.5127 NP	10.4245
Black Plastic	11	1/2"	10.5117 NP	10.4247
Grey Plastic	11	1/2"	10.4240 NP	10.4242

CABLE COUPLER HOOD

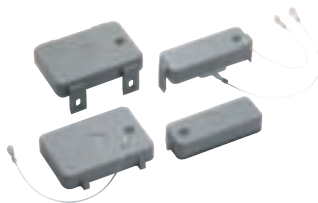


Material	Size of Entry		Without Cable Gland	With Cable Gland
	PG	NPT	NPT Part #	PG Part #
Zinc Die Cast	11	1/2"	10.5129 NP	10.4295
Black Plastic	11	1/2"	10.4292 NP	10.6203
Grey Plastic	11	1/2"	10.4290 NP	10.4291

DUST COVERS WITH OR WITHOUT ATTACHMENT STRING

Material: Thermoplastic Resin or Aluminum

Temperature: -40°C to 125°C



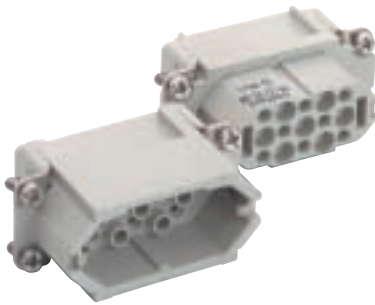
Covers for Panel Mount or Surface Mount Bases/ and Cable Coupler Hoods	Part # with string	Part # without string
Dust Cover for HA 3/4 Housings with Male Insert	10.4304	10.4300
Metal Dust Cover for HA 3/4 Housings with Male Insert	10.5130	10.4303
Dust Cover for HA 3/4 Housings with Female Insert (includes gasket)	10.4301	-
Metal Dust Cover for HA 3/4 Housings with Female Insert (includes gasket)	10.5131	-

EPIC® CONNECTORS

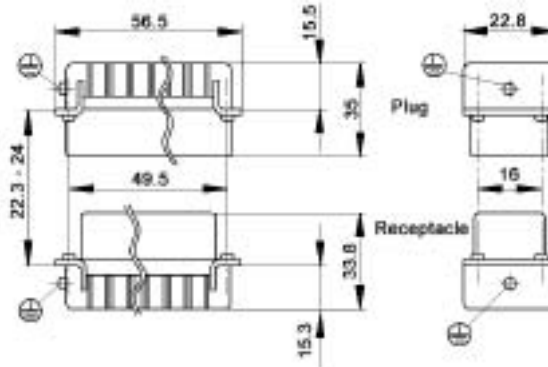
HD 15 Plugs & Receptacles



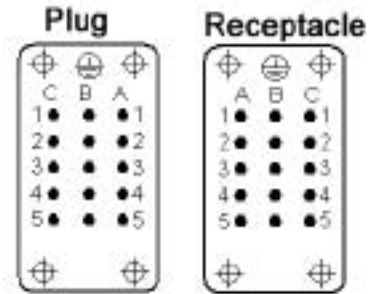
CRIMP TERMINATED: MACHINE CONTACT INSERTS



Contacts Sold Separately



View from cable side



Plug	Receptacle
11.2832	11.2822

All dimensions are in mm.

MACHINE CONTACTS: DIAMETER 1.6 MM

Cross section characteristic



Bags of 100

mm ²	AWG	Silver		Gold		Stripping Length (mm)	Cross Section Characteristic
		Pin	Socket	Pin	Socket		
0.14 - 0.37	26 - 22	13.1620	13.1630	13.1625	13.1635	8	1
0.5	20	13.1621	13.1631	13.1626	13.1636	8	2
0.75 - 1.0	18	13.1622	13.1632	13.1627	13.1637	8	3
1.5	16	13.1623	13.1633	13.1628	13.1638	8	4
2.5	14	13.1624	13.1634	13.1629	13.1639	5.8	5

Part number= 1 contact

CRIMP TOOLS



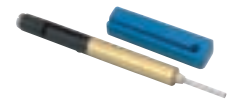
Crimp Tool
11.1470



Crimp Dies
11.1471



Locator
11.1472



Removal Tool
11.1610

MATING COMPONENTS

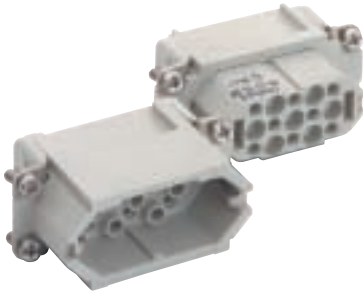
HD 15 Plugs & Receptacles fit into EPIC® HA 10 Housings. A quick reference for the mating components is shown. Diagrams are located in the HA Section of the catalog (Page 242). Please note that metric parts are available.

EPIC® CONNECTORS

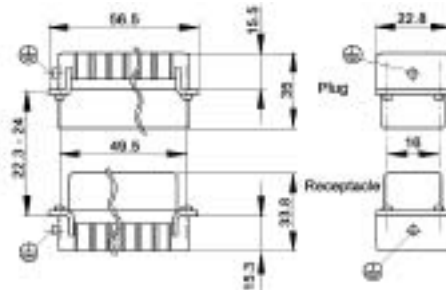
HD 15 Plugs & Receptacles



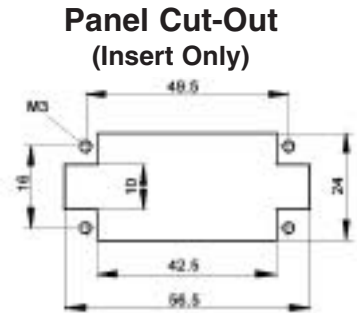
CRIMP TERMINATED: STAMPED & FORMED CONTACT INSERTS



Contacts Sold Separately

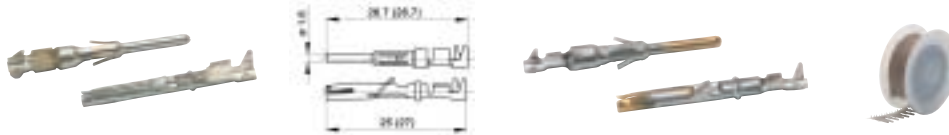


Plug	Receptacle
11.2550	11.2560



All dimensions are in mm.

STAMPED & FORMED CONTACTS: DIAMETER 1.6 MM



mm ²	Stripping Length (mm)
0.14 - 0.5	2.5 - 0.5
0.5 - 1.5	3.5 - 0.5
1.5 - 2.5	3.5 - 0.5

		Bags of 100				Silver: Left Hand Feed Reel			
mm ²	AWG	Silver		Gold		Reel of 100		Reel of 200	
		Pin	Socket	Pin	Socket	Pin	Socket	Pin	Socket
0.14 - 0.5	26 - 20	11.2411	11.2311	11.2431	11.2331	-	-	11.2407	11.2307
0.5 - 1.5	20 - 16	11.2210	11.2361	11.2213	11.2381	-	-	11.2207	11.2357
1.5 - 2.5	16 - 14	11.2235	11.2285	-	-	11.2230	11.2280	-	-

		Reel of 2000: Right Hand Feed				Reel of 2000: Left Hand Feed			
mm ²	AWG	Silver		Gold		Silver		Gold	
		Pin	Socket	Pin	Socket	Pin	Socket	Pin	Socket
0.14 - 0.5	26 - 20	11.2400	11.2300	-	-	11.2404	11.2304	11.2305	11.2405
0.5 - 1.5	20 - 16	11.2200	11.2350	11.2201	11.2352	11.2260	11.2265	-	-
1.5 - 2.5	16 - 14	-	-	-	-	11.2227	11.2277	-	-

Part number= 1 contact (bags) or 1 reel.

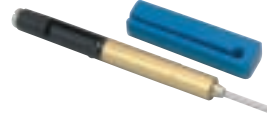
CRIMP TOOLS



Crimp Tool
11.1470



Locator
11.1473



Removal Tool: 11.1610



Crimp Tool for Reel
11.1535



Crimp Dies

0.14-0.5:	11.147170
0.5-1.5:	11.147180
1.5-2.5:	11.147190

Crimp Dies for Reel:

0.14-0.5:	11.1536
0.5-1.5:	11.1537
1.5-2.5:	11.1538



MATING COMPONENTS

HD 15 Plugs & Receptacles fit into EPIC® HA 10 Housings. A quick reference for the mating components is shown. Diagrams are located in the HA Section of the catalog (Page 242). Please note that metric parts are available.

EPIC® CONNECTORS

HA 10 Housings: Single Lever on Base for HD 15 Inserts



HOODS

STANDARD PROFILE

Position of Cable Entry	Size of Entry		Standard Grey Coating		Black Coating (EP)	
	PG	NPT	PG Part #	NPT Part #	PG Part #	NPT Part #
Top Entry	13.5	1/2"	10.446010	10.4460 NP	-	-
	16	1/2"	10.446110	10.4461 NP	70.4610	70.4610 NP
Side Entry	16	1/2"	10.445010	10.4450 NP	70.4630	70.4630 NP
	21	3/4"	10.445510	10.4455 NP	-	-

HIGH PROFILE

Position of Cable Entry	Size of Entry		Standard Grey Coating		Black Coating (EP)	
	PG	NPT	PG Part #	NPT Part #	PG Part #	NPT Part #
Top Entry	16	1/2"	70.4602	70.4602 NP	70.4612	70.4612 NP
	21	3/4"	70.4604	70.4604 NP	70.4614	70.4614 NP
Side Entry	16	1/2"	70.4622	70.4622 NP	70.4632	70.4632 NP
	21	3/4"	70.4624	70.4624 NP	70.4634	70.4634 NP



PANEL MOUNT BASES

Description	Standard Grey Coating	Black Coating (EP)
Without Dust Cover	10.4420	70.4425
With Dust Cover	70.4440	70.4445

SURFACE MOUNT BASES

WITHOUT DUST COVER

Number of Entries	Size of Entry		Standard Grey Coating		Black Coating (EP)	
	PG	NPT	PG Part #	NPT Part #	PG Part #	NPT Part #
1 Entry	16	1/2"	10.4481	10.4481 NP	70.4472	70.4472 NP
	21	3/4"	10.4480	10.4480 NP	70.4474	70.4474 NP
2 Entries	16	1/2"	10.4501	10.4501 NP	70.4482	70.4482 NP
	21	3/4"	10.4500	10.4500 NP	70.4484	70.4484 NP

WITH DUST COVER

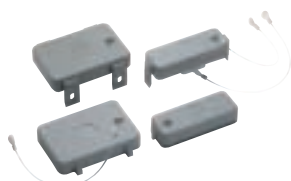
Number of Entries	Size of Entry		Standard Grey Coating		Black Coating (EP)	
	PG	NPT	PG Part #	NPT Part #	PG Part #	NPT Part #
1 Entry	16	1/2"	70.4552	70.4552 NP	70.4572	70.4572 NP
	21	3/4"	70.4554	70.4554 NP	70.4574	70.4574 NP
2 Entries	16	1/2"	70.4562	70.4562 NP	70.4582	70.4582 NP
	21	3/4"	70.4564	70.4564 NP	70.4584	70.4584 NP



CABLE COUPLER HOOD

Profile	Size of Entry		Without Cable Gland		With Cable Gland	
	PG	NPT	PG Part #	NPT Part #	PG Part #	NPT Part #
Standard Profile	13.5	1/2"	10.4390	10.4390 NP	-	-
	16	1/2"	70.4500	70.4500 NP	70.4510	70.4510 NP
High Profile	21	3/4"	70.4504	70.4504 NP	70.4514	70.4514 NP

DUST COVERS WITH OR WITHOUT ATTACHMENT STRING



Material: Thermoplastic Resin

Temperature: -40°C to 125°C

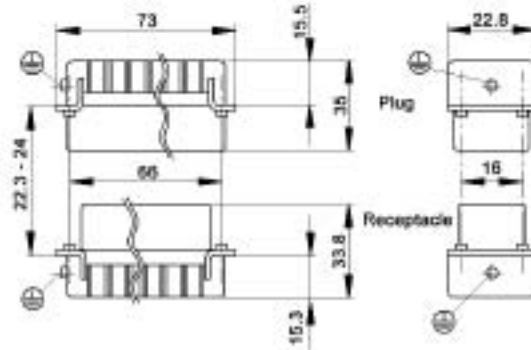
	Part # with string	Part # without string
Dust cover for HA 10 Panel Mount or Surface Mount Base/ Cable Coupler hoods (includes gasket)	10.4575	10.4577
Dust cover for HA 10 Hoods	10.4576	10.4578

EPIC® CONNECTORS

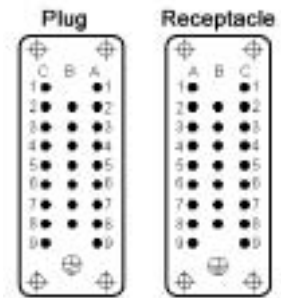
HD 25 Plugs & Receptacles



CRIMP TERMINATED: MACHINE CONTACT INSERTS



View from cable side



Contacts Sold Separately

	Plug	Receptacle
	11.2833	11.2823

All dimensions are in mm.

MACHINE CONTACTS: DIAMETER 1.6 MM

Cross section characteristic



Bags of 100

mm ²	AWG	Silver		Gold		Stripping Length (mm)	Cross Section Characteristic
		Pin	Socket	Pin	Socket		
0.14 - 0.37	26 - 22	13.1620	13.1630	13.1625	13.1635	8	1
0.5	20	13.1621	13.1631	13.1626	13.1636	8	2
0.75 - 1.0	18	13.1622	13.1632	13.1627	13.1637	8	3
1.5	16	13.1623	13.1633	13.1628	13.1638	8	4
2.5	14	13.1624	13.1634	13.1629	13.1639	5.8	5

Part number= 1 contact

CRIMP TOOLS



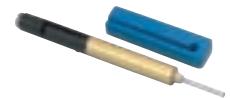
Crimp Tool
11.1470



Crimp Dies
11.1471



Locator
11.1472



Removal Tool
11.1610

MATING COMPONENTS

HD 25 Plugs & Receptacles fit into EPIC® HA 16 Housings. A quick reference for the mating components is shown. Diagrams are located in the HA Section of the catalog (Page 245). Please note that metric parts are available.

EPIC® CONNECTORS

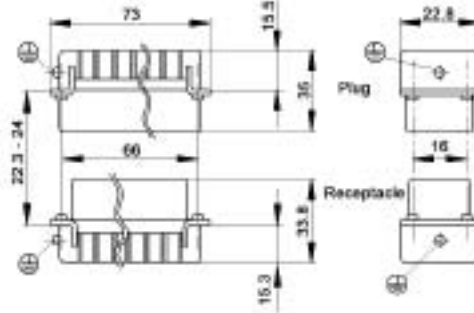
HD 25 Plugs & Receptacles



CRIMP TERMINATED: STAMPED & FORMED CONTACT INSERTS

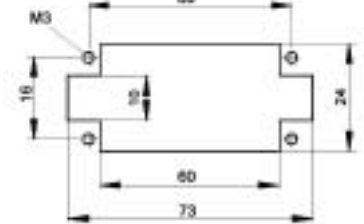


Contacts Sold Separately



Plug	Receptacle
11.2600	11.2610

Panel Cut-Out (Insert Only)



All dimensions are in mm.

STAMPED & FORMED CONTACTS: DIAMETER 1.6 MM



mm ²	Stripping Length (mm)
0.14 - 0.5	2.5 - 0.5
0.5 - 1.5	3.5 - 0.5
1.5 - 2.5	3.5 - 0.5

		Bags of 100				Silver: Left Hand Feed Reel			
mm ²	AWG	Silver		Gold		Reel of 100		Reel of 200	
		Pin	Socket	Pin	Socket	Pin	Socket	Pin	Socket
0.14 - 0.5	26 - 20	11.2411	11.2311	11.2431	11.2331	-	-	11.2407	11.2307
0.5 - 1.5	20 - 16	11.2210	11.2361	11.2213	11.2381	-	-	11.2207	11.2357
1.5 - 2.5	16 - 14	11.2235	11.2285	-	-	11.2230	11.2280	-	-
		Reel of 2000: Right Hand Feed				Reel of 2000: Left Hand Feed			
mm ²	AWG	Silver		Gold		Silver		Gold	
		Pin	Socket	Pin	Socket	Pin	Socket	Pin	Socket
0.14 - 0.5	26 - 20	11.2400	11.2300	-	-	11.2404	11.2304	11.2305	11.2405
0.5 - 1.5	20 - 16	11.2200	11.2350	11.2201	11.2352	11.2260	11.2265	-	-
1.5 - 2.5	16 - 14	-	-	-	-	11.2227	11.2277	-	-

Part number= 1 contact (bags) or 1 reel.

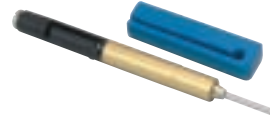
CRIMP TOOLS



Crimp Tool
11.1470



Locator
11.1473



Removal Tool: 11.1610



Crimp Tool for Reel
11.1535



Crimp Dies

0.14-0.5:	11.147170
0.5-1.5:	11.147180
1.5-2.5:	11.147190

Crimp Dies for Reel:

0.14-0.5:	11.1536
0.5-1.5:	11.1537
1.5-2.5:	11.1538



MATING COMPONENTS

HD 25 Plugs & Receptacles fit into EPIC® HA 16 Housings. A quick reference for the mating components is shown. Diagrams are located in the HA Section of the catalog (Page 245). Please note that metric parts are available.

EPIC® CONNECTORS

HA 16 Housings: Single Lever on Base for HD 25 Inserts



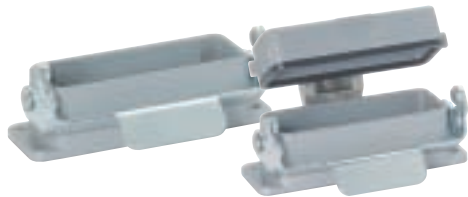
HOODS

STANDARD PROFILE

Position of Cable Entry	Size of Entry		Standard Grey Coating		Black Coating (EP)	
	PG	NPT	PG Part #	NPT Part #	PG Part #	NPT Part #
Top Entry	16	1/2"	10.565010	10.5650 NP	70.4910	70.4910 NP
	21	3/4"	10.565210	10.5652 NP	-	-
Side Entry	16	1/2"	10.564010	10.5640 NP	70.4930	70.4930 NP
	21	3/4"	10.564510	10.5645 NP	-	-

HIGH PROFILE

Position of Cable Entry	Size of Entry		Standard Grey Coating		Black Coating (EP)	
	PG	NPT	PG Part #	NPT Part #	PG Part #	NPT Part #
Top Entry	16	1/2"	70.4902	70.4902 NP	70.4912	70.4912 NP
	21	3/4"	70.4904	70.4904 NP	70.4914	70.4914 NP
Side Entry	16	1/2"	70.4922	70.4922 NP	70.4932	70.4932 NP
	21	3/4"	70.4924	70.4924 NP	70.4934	70.4934 NP



PANEL MOUNT BASES

Description	Standard Grey Coating	Black Coating (EP)
Without Dust Cover	10.4620	70.4725
With Dust Cover	70.4740	70.4745

SURFACE MOUNT BASES

WITHOUT DUST COVER

Number of Entries	Size of Entry		Standard Grey Coating		Black Coating (EP)	
	PG	NPT	PG Part #	NPT Part #	PG Part #	NPT Part #
1 Entry	16	1/2"	10.5671	10.5671 NP	70.4772	70.4772 NP
	21	3/4"	10.5670	10.5670 NP	70.4774	70.4774 NP
2 Entries	16	1/2"	10.5681	10.5681 NP	70.4782	70.4782 NP
	21	3/4"	10.5680	10.5680 NP	70.4784	70.4784 NP

WITH DUST COVER

Number of Entries	Size of Entry		Standard Grey Coating		Black Coating (EP)	
	PG	NPT	PG Part #	NPT Part #	PG Part #	NPT Part #
1 Entry	16	1/2"	70.4852	70.4852 NP	70.4872	70.4872 NP
	21	3/4"	70.4854	70.4854 NP	70.4874	70.4874 NP
2 Entries	16	1/2"	70.4862	70.4862 NP	70.4882	70.4882 NP
	21	3/4"	70.4864	70.4864 NP	70.4884	70.4884 NP



CABLE COUPLER HOOD

Profile	Size of Entry		Without Cable Gland		With Cable Gland	
	PG	NPT	PG Part #	NPT Part #	PG Part #	NPT Part #
Standard Profile	16	1/2"	10.5630	10.5630 NP	70.4810	70.4810 NP
High Profile	16	1/2"	70.4802	70.4802 NP	70.4812	70.4812 NP
	21	3/4"	70.4804	70.4804 NP	70.4814	70.4814 NP

DUST COVERS WITH OR WITHOUT ATTACHMENT STRING



Material: Thermoplastic Resin

Temperature: -40°C to 125°C

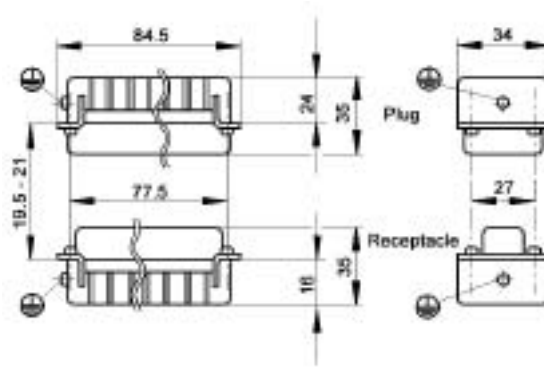
	Part # with string	Part # without string
Dust cover for HA 16 Panel Mount or Surface Mount Base/ Cable Coupler hoods (includes gasket)	10.4695	10.4697
Dust cover for HA 16 Hoods	10.4696	10.4698

EPIC® CONNECTORS

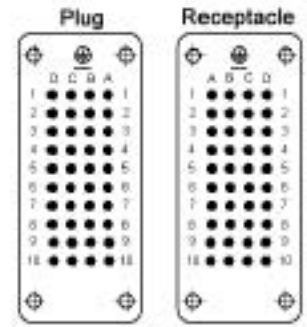
HD 40 Plugs & Receptacles



CRIMP TERMINATED: MACHINE CONTACT INSERTS



View from cable side



Contacts Sold Separately

Plug	Receptacle
11.2652	11.2662

All dimensions are in mm.

MACHINE CONTACTS: DIAMETER 1.6 MM

Cross section characteristic



Bags of 100

mm ²	AWG	Silver		Gold		Stripping Length (mm)	Cross Section Characteristic
		Pin	Socket	Pin	Socket		
0.14 - 0.37	26 - 22	13.1620	13.1630	13.1625	13.1635	8	1
0.5	20	13.1621	13.1631	13.1626	13.1636	8	2
0.75 - 1.0	18	13.1622	13.1632	13.1627	13.1637	8	3
1.5	16	13.1623	13.1633	13.1628	13.1638	8	4
2.5	14	13.1624	13.1634	13.1629	13.1639	5.8	5

Part number= 1 contact

CRIMP TOOLS



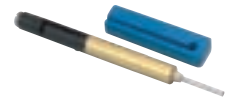
Crimp Tool
11.1470



Crimp Dies
11.1471



Locator
11.1472



Removal Tool
11.1610

MATING COMPONENTS

HD 40 Plugs & Receptacles fit into EPIC® HBE 16 Housings. A quick reference for the mating components is shown. Diagrams are located in the HBE Section of the catalog (Page 293). Please note that metric parts are available.

EPIC® CONNECTORS

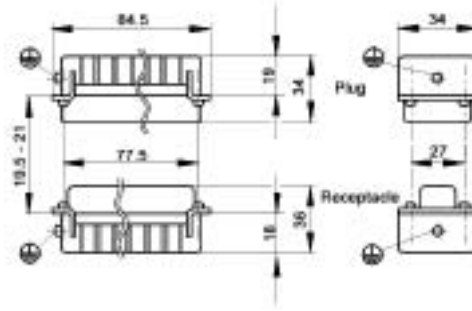
HD 40 Plugs & Receptacles



CRIMP TERMINATED: STAMPED & FORMED CONTACT INSERTS

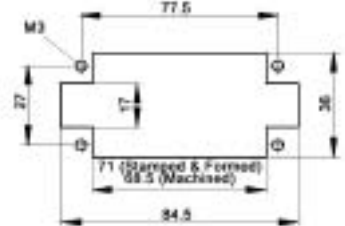


Contacts Sold Separately



Plug	Receptacle
11.2650	11.2660

Panel Cut-Out (Insert Only)



All dimensions are in mm.

STAMPED & FORMED CONTACTS: DIAMETER 1.6 MM



mm ²	Stripping Length (mm)
0.14 - 0.5	2.5 - 0.5
0.5 - 1.5	3.5 - 0.5
1.5 - 2.5	3.5 - 0.5

		Bags of 100				Silver: Left Hand Feed Reel			
mm ²	AWG	Silver		Gold		Reel of 100		Reel of 200	
		Pin	Socket	Pin	Socket	Pin	Socket	Pin	Socket
0.14 - 0.5	26 - 20	11.2411	11.2311	11.2431	11.2331	-	-	11.2407	11.2307
0.5 - 1.5	20 - 16	11.2210	11.2361	11.2213	11.2381	-	-	11.2207	11.2357
1.5 - 2.5	16 - 14	11.2235	11.2285	-	-	11.2230	11.2280	-	-

		Reel of 2000: Right Hand Feed				Reel of 2000: Left Hand Feed			
mm ²	AWG	Silver		Gold		Silver		Gold	
		Pin	Socket	Pin	Socket	Pin	Socket	Pin	Socket
0.14 - 0.5	26 - 20	11.2400	11.2300	-	-	11.2404	11.2304	11.2305	11.2405
0.5 - 1.5	20 - 16	11.2200	11.2350	11.2201	11.2352	11.2260	11.2265	-	-
1.5 - 2.5	16 - 14	-	-	-	-	11.2227	11.2277	-	-

Part number= 1 contact (bags) or 1 reel.

CRIMP TOOLS



Crimp Tool
11.1470



Locator
11.1473



Removal Tool: 11.1610



Crimp Tool for Reel
11.1535



Crimp Dies

0.14-0.5:	11.147170
0.5-1.5:	11.147180
1.5-2.5:	11.147190

Crimp Dies for Reel:

0.14-0.5:	11.1536
0.5-1.5:	11.1537
1.5-2.5:	11.1538



MATING COMPONENTS

HD 40 Plugs & Receptacles fit into EPIC® HBE 16 Housings. A quick reference for the mating components is shown. Diagrams are located in the HBE Section of the catalog (Page 293). Please note that metric parts are available.

EPIC® CONNECTORS

HBE 16 Housings: Single Lever on Base for HD 40 Inserts



HOODS

STANDARD PROFILE

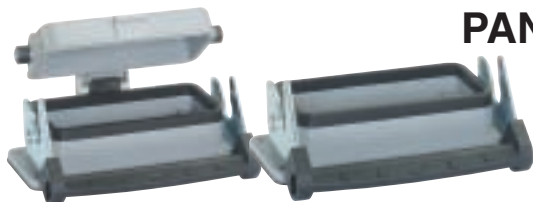


Position of Cable Entry	Size of Entry		Standard Grey Coating		Black Coating (EP)	
	PG	NPT	PG Part #	NPT Part #	PG Part #	NPT Part #
Top Entry	21	3/4"	10.0809	10.0809 NP	70.0990	70.0990 NP
	29	1"	10.0909	10.0909 NP	-	-
Side Entry	21	3/4"	10.0829	10.0829 NP	70.1090	70.1090 NP
	29	1"	10.0929	10.0929 NP	-	-

HIGH PROFILE

Position of Cable Entry	Size of Entry		Standard Grey Coating		Black Coating (EP)	
	PG	NPT	PG Part #	NPT Part #	PG Part #	NPT Part #
Top Entry	21	3/4"	70.0942	70.0942 NP	70.0992	70.0992 NP
	29	1"	70.0944	70.0944 NP	70.0994	70.0994 NP
Side Entry	21	3/4"	70.1042	70.1042 NP	70.1092	70.1092 NP
	29	1"	70.1044	70.1044 NP	70.1094	70.1094 NP

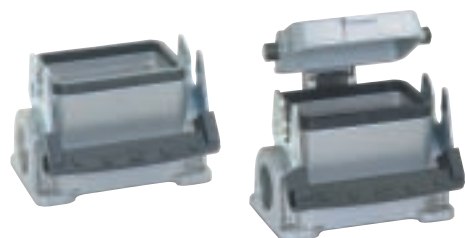
PANEL MOUNT BASES



Description	Standard Grey Coating	Black Coating (EP)
Without Dust Cover	10.0729	70.0827
With Dust Cover	10.0739	70.0837

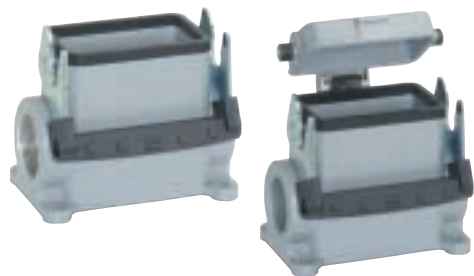
SURFACE MOUNT BASES

STANDARD PROFILE



# of Entries	Size of Entry		Standard Grey Coating		Black Coating (EP)	
	PG	NPT	PG Part #	NPT Part #	PG Part #	NPT Part #
2 Entries	21	3/4"	10.0759	10.0759 NP	70.1130	70.1130 NP
1 Entry	21	3/4"	10.0749	10.0749 NP	70.1120	70.1120 NP
2 Entries with dust cover	-	-	-	-	-	-
1 Entry with dust cover	21	3/4"	10.0769	10.0769 NP	70.1160	70.1160 NP

HIGH PROFILE



# of Entries	Size of Entry		Standard Grey Coating		Black Coating (EP)	
	PG	NPT	PG Part #	NPT Part #	PG Part #	NPT Part #
2 Entries	21	3/4"	70.1112	70.1112 NP	70.1132	70.1132 NP
	29	1"	70.1114	70.1114 NP	70.1134	70.1134 NP
1 Entry	21	3/4"	70.1102	70.1102 NP	70.1122	70.1122 NP
	29	1"	70.1104	70.1104 NP	70.1124	70.1124 NP
2 Entries with dust cover	21	3/4"	70.1152	70.1152 NP	70.1172	70.1172 NP
	29	1"	70.1154	70.1154 NP	70.1174	70.1174 NP
1 Entry with dust cover	21	3/4"	70.1142	70.1142 NP	70.1162	70.1162 NP
	29	1"	70.1144	70.1144 NP	70.1164	70.1164 NP

CABLE COUPLER HOODS



Profile	Size of Entry		Standard Grey Coating		Black Coating (EP)	
	PG	NPT	PG Part #	NPT Part #	PG Part #	NPT Part #
Standard Profile	21	3/4"	10.0869	10.0869 NP	70.0930	70.0930 NP
	29	1"	10.0969	10.0969 NP	-	-
High Profile	21	3/4"	70.0922	70.0922 NP	70.0932	70.0932 NP
	29	1"	70.0924	70.0924 NP	70.0934	70.0934 NP

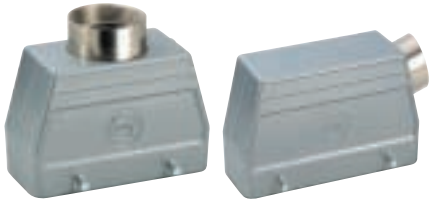
EPIC® CONNECTORS

HBE 16 Housings: Double Levers on Base for HD 40 Inserts

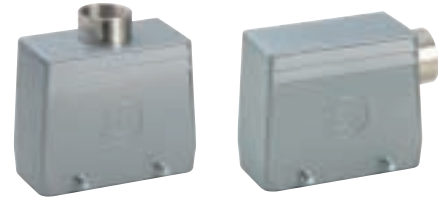


HOODS

STANDARD PROFILE



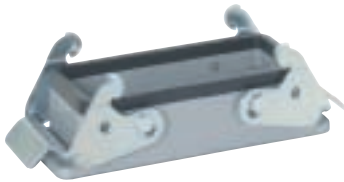
Position of Cable Entry	Size of Entry		Standard Grey Coating		Black Coating (EP)	
	PG	NPT	PG Part #	NPT Part #	PG Part #	NPT Part #
Top Entry	21	3/4"	10.0800	10.0800 NP	70.1010	70.1010 NP
	29	1"	10.0900	10.0900 NP	-	-
Side Entry	21	3/4"	10.0820	10.0820 NP	70.1030	70.1030 NP
	29	1"	10.0920	10.0920 NP	-	-



HIGH PROFILE

Position of Cable Entry	Size of Entry		Standard Grey Coating		Black Coating (EP)	
	PG	NPT	PG Part #	NPT Part #	PG Part #	NPT Part #
Top Entry	21	3/4"	70.1002	70.1002 NP	70.1012	70.1012 NP
	29	1"	70.1004	70.1004 NP	70.1014	70.1014 NP
Side Entry	21	3/4"	70.1022	70.1022 NP	70.1032	70.1032 NP
	29	1"	70.1024	70.1024 NP	70.1034	70.1034 NP

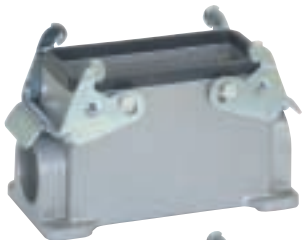
PANEL MOUNT BASES



Description	Standard Grey Coating	Black Coating (EP)
Without Dust Cover	10.0720	70.0825

SURFACE MOUNT BASES

STANDARD PROFILE



# of Entries	Size of Entry		Standard Grey Coating		Black Coating (EP)	
	PG	NPT	PG Part #	NPT Part #	PG Part #	NPT Part #
2 Entries	21	3/4"	10.0750	10.0750 NP	70.0880	70.0880 NP
1 Entry	21	3/4"	10.0740	10.0740 NP	70.0870	70.0870 NP

HIGH PROFILE



# of Entries	Size of Entry		Standard Grey Coating		Black Coating (EP)	
	PG	NPT	PG Part #	NPT Part #	PG Part #	NPT Part #
2 Entries	21	3/4"	70.0862	70.0862 NP	70.0882	70.0882 NP
	29	1"	70.0864	70.0864 NP	70.0884	70.0884 NP
1 Entry	21	3/4"	70.0852	70.0852 NP	70.0872	70.0872 NP
	29	1"	70.0854	70.0854 NP	70.0874	70.0874 NP

CABLE COUPLER HOODS



Profile	Size of Entry		Standard Grey Coating		Black Coating (EP)	
	PG	NPT	PG Part #	NPT Part #	PG Part #	NPT Part #
Standard Profile	21	3/4"	10.0860	10.0860 NP	70.0910	70.0910 NP
	29	1"	10.0960	10.0960 NP	-	-
High Profile	21	3/4"	70.0902	70.0902 NP	70.0912	70.0912 NP
	29	1"	70.0904	70.0904 NP	70.0914	70.0914 NP

EPIC[®] CONNECTORS

HBE 16 Housings: Double Levers on Hood for HD 40 Inserts



HOODS



STANDARD PROFILE

Position of Cable Entry	Size of Entry		Standard Grey Coating		Black Coating (EP)	
	PG	NPT	PG Part #	NPT Part #	PG Part #	NPT Part #
Top Entry	21	3/4"	10.0810	10.0810 NP	70.1060	70.1060 NP
	29	1"	10.0910	10.0910 NP	-	-
Side Entry	21	3/4"	10.0830	10.0830 NP	70.1080	70.1080 NP
	29	1"	10.0930	10.0930 NP	-	-

HIGH PROFILE

Position of Cable Entry	Size of Entry		Standard Grey Coating		Black Coating (EP)	
	PG	NPT	PG Part #	NPT Part #	PG Part #	NPT Part #
Top Entry	21	3/4"	70.1052	70.1052 NP	70.1062	70.1062 NP
	29	1"	70.1054	70.1054 NP	70.1064	70.1064 NP
Side Entry	21	3/4"	70.1072	70.1072 NP	70.1082	70.1032 NP
	29	1"	70.1074	70.1074 NP	70.1084	70.1034 NP

PANEL MOUNT BASES



Description	Standard Grey Coating	Black Coating (EP)
Without Dust Cover	10.0731	-
With Dust Cover	10.0730	70.0835

SURFACE MOUNT BASES



# of Entries	Size of Entry		Standard Grey Coating		Black Coating (EP)	
	PG	NPT	PG Part #	NPT Part #	PG Part #	NPT Part #
2 Entries	21	3/4"	70.0960	70.0960 NP	70.0980	70.0980 NP
1 Entry	21	3/4"	10.0760	10.0760 NP	70.0970	70.0970 NP
2 Entries with dust cover	21	3/4"	70.0962	70.0962 NP	70.0982	70.0982 NP
	29	1"	70.0964	70.0964 NP	70.0984	70.0984 NP
1 Entry with dust cover	21	3/4"	70.0952	70.0952 NP	70.0972	70.0972 NP
	29	1"	70.0954	70.0954 NP	70.0974	70.0974 NP

DUST COVERS WITH ATTACHMENT STRING

Material: Thermoplastic Resin

Temperature:

-40°C to 125°C



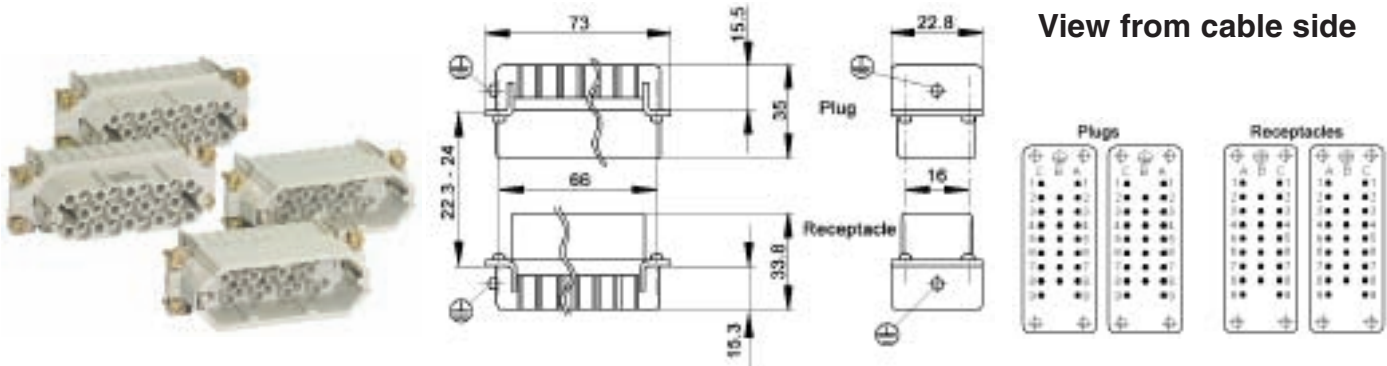
	Part #
Dust cover with single lever for HBE 16 Hoods	10.0886
Dust cover with single lever bolts for HBE 16 Panel Mount or Surface Mount Base/ Cable Coupler Hood	10.0887
Dust cover with double levers and gasket for HBE 16 Hoods	10.0885
Dust cover with double lever bolts for HBE 16 Panel Mount or Surface Mount Base/ Cable Coupler Hood	10.0870
Dust cover with double lever bolts and gasket for HBE 16 Hoods	10.0871

EPIC® CONNECTORS

HD 50 Plugs & Receptacles



CRIMP TERMINATED: MACHINE CONTACT INSERTS

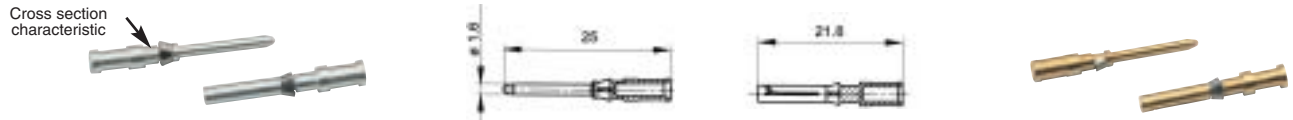


Contacts Sold Separately

Plug	Receptacle
11.2602 (2X)	11.2612 (2X)

All dimensions are in mm.

MACHINE CONTACTS: DIAMETER 1.6 MM



Bags of 100

mm ²	AWG	Silver		Gold		Stripping Length (mm)	Cross Section Characteristic
		Pin	Socket	Pin	Socket		
0.14 - 0.37	26 - 22	13.1620	13.1630	13.1625	13.1635	8	1
0.5	20	13.1621	13.1631	13.1626	13.1636	8	2
0.75 - 1.0	18	13.1622	13.1632	13.1627	13.1637	8	3
1.5	16	13.1623	13.1633	13.1628	13.1638	8	4
2.5	14	13.1624	13.1634	13.1629	13.1639	5.8	5

Part number= 1 contact

CRIMP TOOLS



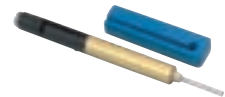
Crimp Tool
11.1470



Crimp Dies
11.1471



Locator
11.1472



Removal Tool
11.1610

MATING COMPONENTS

HD 50 Plugs & Receptacles fit into EPIC® HA 32 Housings. A quick reference for the mating components is shown. Diagrams are located in the HA Section of the catalog (Page 249). Please note that metric parts are available.

EPIC® CONNECTORS

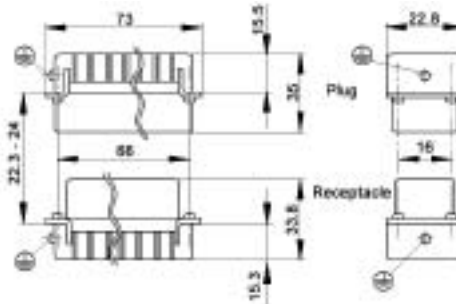
HD 50 Plugs & Receptacles



CRIMP TERMINATED: STAMPED & FORMED CONTACT INSERTS

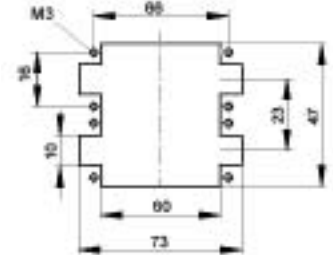


Contacts Sold Separately



Plug	Receptacle
11.2600 (2X)	11.2610 (2X)

Panel Cut-Out
(Inserts Only)



All dimensions are in mm.

STAMPED & FORMED CONTACTS: DIAMETER 1.6 MM



mm ²	Stripping Length (mm)
0.14 - 0.5	2.5 - 0.5
0.5 - 1.5	3.5 - 0.5
1.5 - 2.5	3.5 - 0.5

		Bags of 100				Silver: Left Hand Feed Reel			
mm ²	AWG	Silver		Gold		Reel of 100		Reel of 200	
		Pin	Socket	Pin	Socket	Pin	Socket	Pin	Socket
0.14 - 0.5	26 - 20	11.2411	11.2311	11.2431	11.2331	-	-	11.2407	11.2307
0.5 - 1.5	20 - 16	11.2210	11.2361	11.2213	11.2381	-	-	11.2207	11.2357
1.5 - 2.5	16 - 14	11.2235	11.2285	-	-	11.2230	11.2280	-	-
		Reel of 2000: Right Hand Feed				Reel of 2000: Left Hand Feed			
mm ²	AWG	Silver		Gold		Silver		Gold	
		Pin	Socket	Pin	Socket	Pin	Socket	Pin	Socket
0.14 - 0.5	26 - 20	11.2400	11.2300	-	-	11.2404	11.2304	11.2305	11.2405
0.5 - 1.5	20 - 16	11.2200	11.2350	11.2201	11.2352	11.2260	11.2265	-	-
1.5 - 2.5	16 - 14	-	-	-	-	11.2227	11.2277	-	-

Part number= 1 contact (bags) or 1 reel.

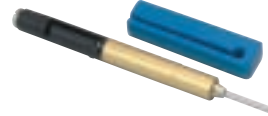
CRIMP TOOLS



Crimp Tool
11.1470



Locator
11.1473



Removal Tool: 11.1610



Crimp Tool for Reel
11.1535



Crimp Dies
0.14-0.5: 11.147170
0.5-1.5: 11.147180
1.5-2.5: 11.147190

Crimp Dies for Reel:
0.14-0.5: 11.1536
0.5-1.5: 11.1537
1.5-2.5: 11.1538



MATING COMPONENTS

HD 50 Plugs & Receptacles fit into EPIC® HA 32 Housings. A quick reference for the mating components is shown. Diagrams are located in the HA Section of the catalog (Page 249). Please note that metric parts are available.

EPIC® CONNECTORS

HA 32 Housings: Double Levers on Base for HD 50 Inserts



HOODS



Position of Cable Entry	Size of Entry		Standard Grey Coating		Black Coating (EP)	
	PG	NPT	PG Part #	NPT Part #	PG Part #	NPT Part #
Top Entry	21	3/4"	10.5820	10.5820 NP	70.5212	70.5212 NP
	29	1"	10.5830	10.5830 NP	70.5214	70.5214 NP
Side Entry	21	3/4"	10.5760	10.5760 NP	70.5232	70.5232 NP
	29	1"	10.5770	10.5770 NP	70.5234	70.5234 NP

PANEL MOUNT BASES



Description	Standard Grey Coating	Black Coating (EP)
Without Dust Cover	10.4720	70.5025

SURFACE MOUNT BASES



# of Entries	Size of Entry		Standard Grey Coating		Black Coating (EP)	
	PG	NPT	PG Part #	NPT Part #	PG Part #	NPT Part #
1 Entry	21	3/4"	10.4740	10.4740 NP	70.5072	70.5072 NP
	29	1"	10.4741	10.4741 NP	70.5074	70.5074 NP
2 Entries	21	3/4"	10.4820	10.4820 NP	70.5082	70.5082 NP
	29	1"	10.4821	10.4821 NP	70.5084	70.5084 NP

CABLE COUPLER HOOD



Size of Entry		Standard Grey Coating		Black Coating (EP)	
PG	NPT	PG Part #	NPT Part #	PG Part #	NPT Part #
21	3/4"	10.5880	10.5880 NP	70.5110	70.5110 NP
29	1"	10.5885	10.5885 NP	70.5112	70.5112 NP

DUST COVERS WITH OR WITHOUT ATTACHMENT STRING



Material: Thermoplastic Resin

Temperature: -40°C to 125°C

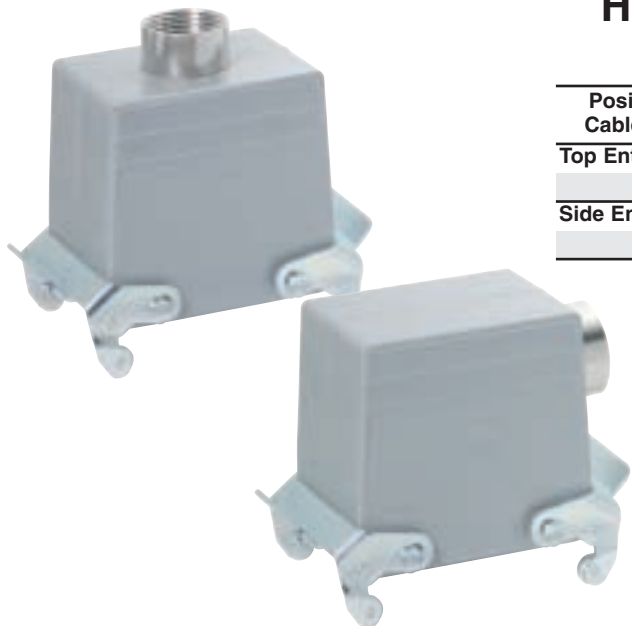
	Part # with string	Part # without string
Dust cover for HA 32 Panel Mount or Surface Mount Base/ Cable Coupler hoods	10.4815	10.4817
Dust cover for HA 32 Hoods (includes gasket)	10.4816	10.4818

EPIC® CONNECTORS

HA 32 Housings: Double Levers on Hood for HD 50 Inserts



HOODS



Position of Cable Entry	Size of Entry		Standard Grey Coating		Black Coating (EP)	
	PG	NPT	PG Part #	NPT Part #	PG Part #	NPT Part #
Top Entry	21	3/4"	10.5840	10.5840 NP	70.5262	70.5262 NP
	29	1"	10.5850	10.5850 NP	70.5264	70.5264 NP
Side Entry	21	3/4"	10.5780	10.5780 NP	70.5282	70.5282 NP
	29	1"	10.5790	10.5790 NP	70.5284	70.5284 NP

PANEL MOUNT BASES



WITH DUST COVER

Description	Standard Grey Coating	Black Coating (EP)
Without Dust Cover	10.4731	-
With Dust Cover	70.5030	70.5035

SURFACE MOUNT BASES



WITH DUST COVER


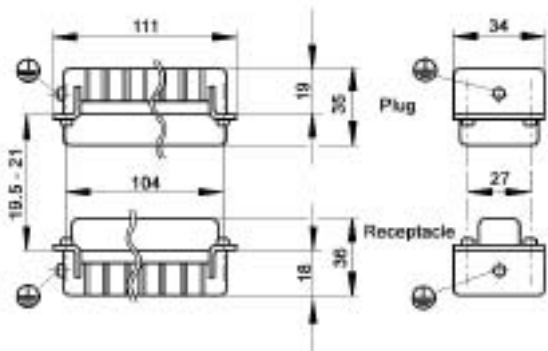
# of Entries	Size of Entry		Standard Grey Coating		Black Coating (EP)	
	PG	NPT	PG Part #	NPT Part #	PG Part #	NPT Part #
1 Entry with dust cover	21	3/4"	70.5152	70.5152 NP	70.5172	70.5172 NP
	29	1"	70.5154	70.5154 NP	70.5174	70.5174 NP
2 Entries with dust cover	21	3/4"	70.5162	70.5162 NP	70.5182	70.5182 NP
	29	1"	70.5164	70.5164 NP	70.5184	70.5184 NP

EPIC® CONNECTORS

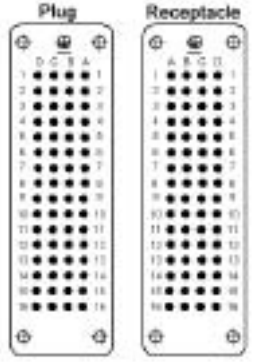
HD 64 Plugs & Receptacles



CRIMP TERMINATED: MACHINE CONTACT INSERTS

View from cable side

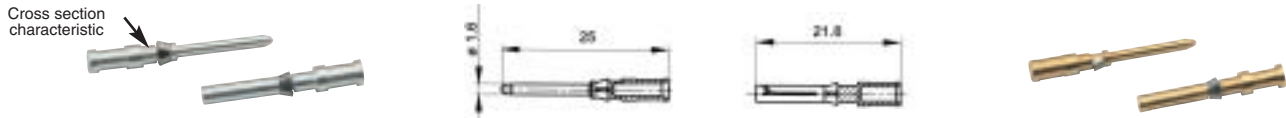


Plug	Receptacle
11.2720	11.2730

All dimensions are in mm.

Contacts Sold Separately

MACHINE CONTACTS: DIAMETER 1.6 MM



Bags of 100

mm ²	AWG	Silver		Gold		Stripping Length (mm)	Cross Section Characteristic
		Pin	Socket	Pin	Socket		
0.14 - 0.37	26 - 22	13.1620	13.1630	13.1625	13.1635	8	1
0.5	20	13.1621	13.1631	13.1626	13.1636	8	2
0.75 - 1.0	18	13.1622	13.1632	13.1627	13.1637	8	3
1.5	16	13.1623	13.1633	13.1628	13.1638	8	4
2.5	14	13.1624	13.1634	13.1629	13.1639	5.8	5

Part number= 1 contact

CRIMP TOOLS



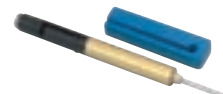
Crimp Tool
11.1470



Crimp Dies
11.1471



Locator
11.1472



Removal Tool
11.1610

MATING COMPONENTS

HD 64 Plugs & Receptacles fit into EPIC® HBE 24 Housings. A quick reference for the mating components is shown. Diagrams are located in the HBE Section of the catalog (Page 303). Please note that metric parts are available.

EPIC® CONNECTORS

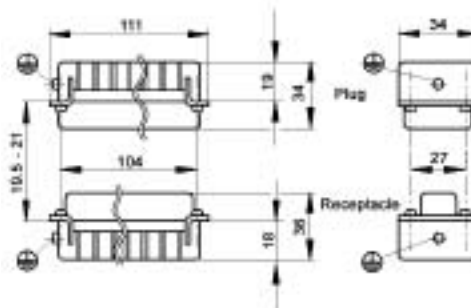
HD 64 Plugs & Receptacles



CRIMP TERMINATED: STAMPED & FORMED CONTACT INSERTS

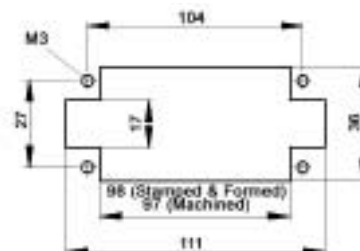


Contacts Sold Separately



Plug	Receptacle
11.2700	11.2710

Panel Cut-Out (Insert Only)



All dimensions are in mm.

STAMPED & FORMED CONTACTS: DIAMETER 1.6 MM



mm ²	Stripping Length (mm)
0.14 - 0.5	2.5 - 0.5
0.5 - 1.5	3.5 - 0.5
1.5 - 2.5	3.5 - 0.5

		Bags of 100				Silver: Left Hand Feed Reel			
mm ²	AWG	Silver		Gold		Reel of 100		Reel of 200	
		Pin	Socket	Pin	Socket	Pin	Socket	Pin	Socket
0.14 - 0.5	26 - 20	11.2411	11.2311	11.2431	11.2331	-	-	11.2407	11.2307
0.5 - 1.5	20 - 16	11.2210	11.2361	11.2213	11.2381	-	-	11.2207	11.2357
1.5 - 2.5	16 - 14	11.2235	11.2285	-	-	11.2230	11.2280	-	-
		Reel of 2000: Right Hand Feed				Reel of 2000: Left Hand Feed			
mm ²	AWG	Silver		Gold		Silver		Gold	
		Pin	Socket	Pin	Socket	Pin	Socket	Pin	Socket
0.14 - 0.5	26 - 20	11.2400	11.2300	-	-	11.2404	11.2304	11.2305	11.2405
0.5 - 1.5	20 - 16	11.2200	11.2350	11.2201	11.2352	11.2260	11.2265	-	-
1.5 - 2.5	16 - 14	-	-	-	-	11.2227	11.2277	-	-

Part number= 1 contact (bags) or 1 reel.

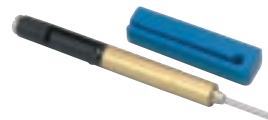
CRIMP TOOLS



Crimp Tool
11.1470



Locator
11.1473



Removal Tool: 11.1610



Crimp Tool for Reel
11.1535



Crimp Dies

0.14-0.5:	11.147170
0.5-1.5:	11.147180
1.5-2.5:	11.147190

Crimp Dies for Reel:

0.14-0.5:	11.1536
0.5-1.5:	11.1537
1.5-2.5:	11.1538



MATING COMPONENTS

HD 64 Plugs & Receptacles fit into EPIC® HBE 24 Housings. A quick reference for the mating components is shown. Diagrams are located in the HBE Section of the catalog (Page 303). Please note that metric parts are available.

EPIC® CONNECTORS

HBE 24 Housings: Single Lever on Base for HD 64 Inserts



HOODS

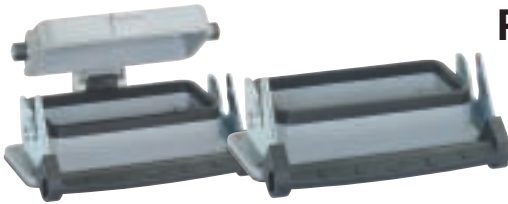
STANDARD PROFILE



Position of Cable Entry	Size of Entry		Standard Grey Coating		Black Coating (EP)	
	PG	NPT	PG Part #	NPT Part #	PG Part #	NPT Part #
Top Entry	21	3/4"	10.1219	10.1219 NP	70.1490	70.1490 NP
	29	1"	10.1119	10.1119 NP	70.1492	70.1492 NP
Side Entry	21	3/4"	10.1139	10.1139 NP	70.1590	70.1590 NP
	29	1"	10.1239	10.1239 NP	70.1592	70.1592 NP

HIGH PROFILE

Position of Cable Entry	Size of Entry		Standard Grey Coating		Black Coating (EP)	
	PG	NPT	PG Part #	NPT Part #	PG Part #	NPT Part #
Top Entry	21	3/4"	70.1444	70.1444 NP	70.1494	70.1494 NP
	29	1"	70.1446	70.1446 NP	70.1496	70.1496 NP
Side Entry	21	3/4"	70.1544	70.1544 NP	70.1594	70.1594 NP
	29	1"	70.1546	70.1546 NP	70.1596	70.1596 NP

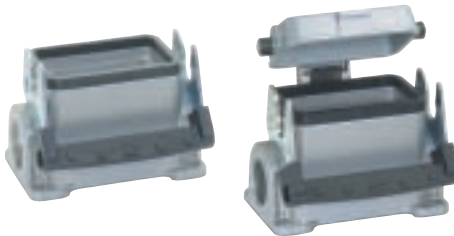


PANEL MOUNT BASES

Description	Standard Grey Coating	Black Coating (EP)
Without Dust Cover	10.1029	70.1327
With Dust Cover	10.1039	70.1337

SURFACE MOUNT BASES

STANDARD PROFILE



# of Entries	Size of Entry		Standard Grey Coating		Black Coating (EP)	
	PG	NPT	PG Part #	NPT Part #	PG Part #	NPT Part #
2 Entries	21	3/4"	10.1059	10.1059 NP	70.1630	70.1630 NP
1 Entry	21	3/4"	10.1049	10.1049 NP	70.1620	70.1620 NP
2 with cover	21	3/4"	10.1099	10.1099 NP	70.1670	70.1670 NP
1 with cover	21	3/4"	10.1079	10.1079 NP	70.1660	70.1660 NP

HIGH PROFILE



# of Entries	Size of Entry		Standard Grey Coating		Black Coating (EP)	
	PG	NPT	PG Part #	NPT Part #	PG Part #	NPT Part #
2 Entries	21	3/4"	70.1612	70.1612 NP	70.1632	70.1632 NP
	29	1"	70.1614	70.1614 NP	70.1634	70.1634 NP
1 Entry	21	3/4"	70.1602	70.1602 NP	70.1622	70.1622 NP
	29	1"	70.1604	70.1604 NP	70.1624	70.1624 NP
2 Entries with dust cover	21	3/4"	70.1652	70.1652 NP	70.1672	70.1672 NP
	29	1"	70.1654	70.1654 NP	70.1674	70.1674 NP
1 Entry with dust cover	21	3/4"	70.1642	70.1642 NP	70.1662	70.1662 NP
	29	1"	70.1644	70.1644 NP	70.1664	70.1664 NP



CABLE COUPLER HOODS

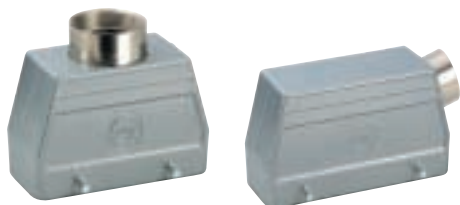
Profile	Size of Entry		Standard Grey Coating		Black Coating (EP)	
	PG	NPT	PG Part #	NPT Part #	PG Part #	NPT Part #
Standard Profile	21	3/4"	10.1279	10.1279 NP	70.1430	70.1430 NP
	29	1"	10.1179	10.1179 NP	70.1432	70.1432 NP
High Profile	21	3/4"	70.1424	70.1424 NP	70.1434	70.1434 NP
	29	1"	70.1426	70.1426 NP	70.1436	70.1436 NP

EPIC[®] CONNECTORS

HBE 24 Housings: Double Levers on Base for HD 64 Inserts

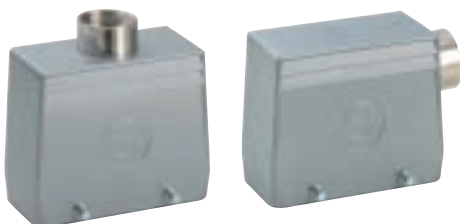


HOODS



STANDARD PROFILE

Position of Cable Entry	Size of Entry		Standard Grey Coating		Black Coating (EP)	
	PG	NPT	PG Part #	NPT Part #	PG Part #	NPT Part #
Top Entry	21	3/4"	10.1210	10.1210 NP	70.1510	70.1510 NP
	29	1"	10.1110	10.1110 NP	70.1512	70.1512 NP
Side Entry	21	3/4"	10.1130	10.1130 NP	70.1530	70.1530 NP
	29	1"	10.1230	10.1230 NP	70.1532	70.1532 NP



HIGH PROFILE

Position of Cable Entry	Size of Entry		Standard Grey Coating		Black Coating (EP)	
	PG	NPT	PG Part #	NPT Part #	PG Part #	NPT Part #
Top Entry	21	3/4"	70.1504	70.1504 NP	70.1514	70.1514 NP
	29	1"	70.1506	70.1506 NP	70.1516	70.1516 NP
Side Entry	21	3/4"	70.1524	70.1524 NP	70.1534	70.1534 NP
	29	1"	70.1526	70.1526 NP	70.1536	70.1536 NP



PANEL MOUNT BASES

Description	Standard Grey Coating	Black Coating (EP)
Without Dust Cover	10.1020	70.1325



SURFACE MOUNT BASES

STANDARD PROFILE

# of Entries	Size of Entry		Standard Grey Coating		Black Coating (EP)	
	PG	NPT	PG Part #	NPT Part #	PG Part #	NPT Part #
2 Entries	21	3/4"	10.1050	10.1050 NP	70.1380	70.1380 NP
1 Entry	21	3/4"	10.1040	10.1040 NP	70.1370	70.1370 NP



HIGH PROFILE

# of Entries	Size of Entry		Standard Grey Coating		Black Coating (EP)	
	PG	NPT	PG Part #	NPT Part #	PG Part #	NPT Part #
2 Entries	21	3/4"	70.1362	70.1362 NP	70.1382	70.1382 NP
	29	1"	70.1364	70.1364 NP	70.1384	70.1384 NP
1 Entry	21	3/4"	70.1352	70.1352 NP	70.1372	70.1372 NP
	29	1"	70.1354	70.1354 NP	70.1374	70.1374 NP



CABLE COUPLER HOODS

Profile	Size of Entry		Standard Grey Coating		Black Coating (EP)	
	PG	NPT	PG Part #	NPT Part #	PG Part #	NPT Part #
Standard Profile	21	3/4"	10.1270	10.1270 NP	70.1410	70.1410 NP
	29	1"	10.1170	10.1170 NP	70.1412	70.1412 NP
High Profile	21	3/4"	70.1404	70.1404 NP	70.1414	70.1414 NP
	29	1"	70.1406	70.1406 NP	70.1416	70.1416 NP

EPIC® CONNECTORS

HBE 24 Housings: Double Levers on Hood for HD 64 Inserts



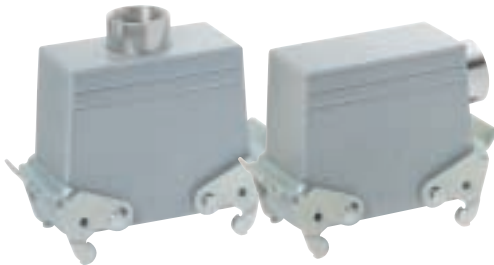
HOODS

STANDARD PROFILE



Position of Cable Entry	Size of Entry		Standard Grey Coating		Black Coating (EP)	
	PG	NPT	PG Part #	NPT Part #	PG Part #	NPT Part #
Top Entry	21	3/4"	10.1220	10.1220 NP	70.1560	70.1560 NP
	29	1"	10.1120	10.1120 NP	70.1562	70.1562 NP
Side Entry	21	3/4"	10.1140	10.1140 NP	70.1580	70.1580 NP
	29	1"	10.1240	10.1240 NP	70.1582	70.1582 NP

HIGH PROFILE



Position of Cable Entry	Size of Entry		Standard Grey Coating		Black Coating (EP)	
	PG	NPT	PG Part #	NPT Part #	PG Part #	NPT Part #
Top Entry	21	3/4"	70.1554	70.1554 NP	70.1564	70.1564 NP
	29	1"	70.1556	70.1556 NP	70.1566	70.1566 NP
Side Entry	21	3/4"	70.1574	70.1574 NP	70.1584	70.1584 NP
	29	1"	70.1576	70.1576 NP	70.1586	70.1586 NP

PANEL MOUNT BASES



Description	Standard Grey Coating	Black Coating (EP)
With Dust Cover	10.1030	70.1335
Without Dust Cover	10.1031	-

SURFACE MOUNT BASES



# of Entries	Size of Entry		Standard Grey Coating		Black Coating (EP)	
	PG	NPT	PG Part #	NPT Part #	PG Part #	NPT Part #
2 Entries	21	3/4"	10.1090	10.1090 NP	70.1480	70.1480 NP
1 Entry	21	3/4"	10.1070	10.1070 NP	70.1470	70.1470 NP
2 Entries with dust cover	21	3/4"	70.1462	70.1462 NP	70.1482	70.1482 NP
	29	1"	70.1464	70.1464 NP	70.1484	70.1484 NP
1 Entry with dust cover	21	3/4"	70.1452	70.1452 NP	70.1472	70.1472 NP
	29	1"	70.1454	70.1454 NP	70.1474	70.1474 NP

DUST COVERS WITH ATTACHMENT STRING

Material: Thermoplastic Resin

Temperature: -40°C to 125°C



	Part #
Dust cover with single lever for HBE 24 Hoods	10.1186
Dust cover with single lever bolts for HBE 24 Panel Mount or Surface Mount Base/ Cable Coupler Hood	10.1187
Dust cover with double levers and gasket for HBE 24 Hoods	10.1195
Dust cover with double lever bolts for HBE 24 Panel Mount or Surface Mount Base/ Cable Coupler Hood	10.1180
Dust cover with double lever bolts and gasket for HBE 24 Hoods	10.1181

EPIC® CONNECTORS

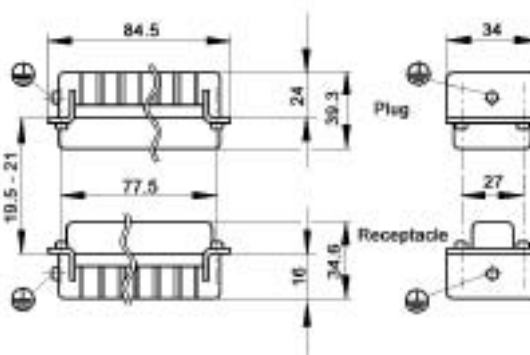
HD 80 Plugs & Receptacles



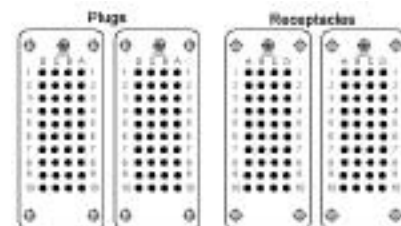
CRIMP TERMINATED: MACHINE CONTACT INSERTS



Contacts Sold Separately



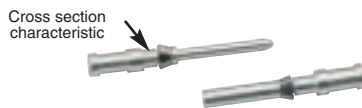
View from cable side



Plug	Receptacle
11.2652(2X)	11.2662 (2X)

All dimensions are in mm.

MACHINE CONTACTS: DIAMETER 1.6 MM



Bags of 100

mm ²	AWG	Silver		Gold		Stripping Length (mm)	Cross Section Characteristic
		Pin	Socket	Pin	Socket		
0.14 - 0.37	26 - 22	13.1620	13.1630	13.1625	13.1635	8	1
0.5	20	13.1621	13.1631	13.1626	13.1636	8	2
0.75 - 1.0	18	13.1622	13.1632	13.1627	13.1637	8	3
1.5	16	13.1623	13.1633	13.1628	13.1638	8	4
2.5	14	13.1624	13.1634	13.1629	13.1639	5.8	5

Part number= 1 contact

CRIMP TOOLS



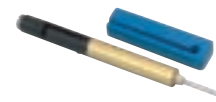
Crimp Tool
11.1470



Crimp Dies
11.1471



Locator
11.1472



Removal Tool
11.1610

MATING COMPONENTS

HD 80 Plugs & Receptacles fit into EPIC® HBE 32 Housings. A quick reference for the mating components is shown. Diagrams are located in the HBE Section of the catalog (Page 313). Please note that metric parts are available.

EPIC® CONNECTORS

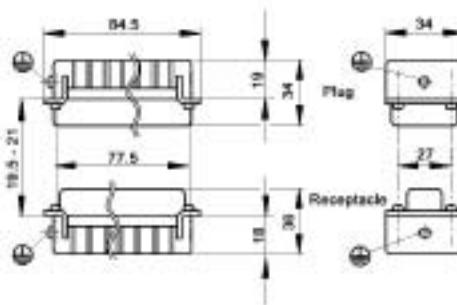
HD 80 Plugs & Receptacles



CRIMP TERMINATED: STAMPED & FORMED CONTACT INSERTS

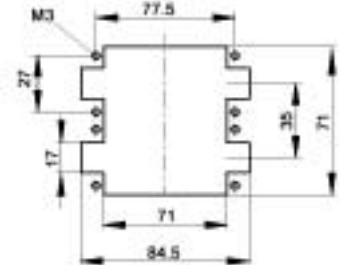


Contacts Sold Separately



Plug	Receptacle
11.2650 (2X)	11.2660 (2X)

Panel Cut-Out
(Inserts Only)



All dimensions are in mm.

STAMPED & FORMED CONTACTS: DIAMETER 1.6 MM



mm ²	Stripping Length (mm)
0.14 - 0.5	2.5 - 0.5
0.5 - 1.5	3.5 - 0.5
1.5 - 2.5	3.5 - 0.5

		Bags of 100				Silver: Left Hand Feed Reel			
mm ²	AWG	Silver		Gold		Reel of 100		Reel of 200	
		Pin	Socket	Pin	Socket	Pin	Socket	Pin	Socket
0.14 - 0.5	26 - 20	11.2411	11.2311	11.2431	11.2331	-	-	11.2407	11.2307
0.5 - 1.5	20 - 16	11.2210	11.2361	11.2213	11.2381	-	-	11.2207	11.2357
1.5 - 2.5	16 - 14	11.2235	11.2285	-	-	11.2230	11.2280	-	-
		Reel of 2000: Right Hand Feed				Reel of 2000: Left Hand Feed			
mm ²	AWG	Silver		Gold		Silver		Gold	
		Pin	Socket	Pin	Socket	Pin	Socket	Pin	Socket
0.14 - 0.5	26 - 20	11.2400	11.2300	-	-	11.2404	11.2304	11.2305	11.2405
0.5 - 1.5	20 - 16	11.2200	11.2350	11.2201	11.2352	11.2260	11.2265	-	-
1.5 - 2.5	16 - 14	-	-	-	-	11.2227	11.2277	-	-

Part number= 1 contact (bags) or 1 reel.

CRIMP TOOLS



Crimp Tool
11.1470



Locator
11.1473



Removal Tool: 11.1610



Crimp Tool for Reel
11.1535



Crimp Dies
0.14-0.5: 11.147170
0.5-1.5: 11.147180
1.5-2.5: 11.147190

Crimp Dies for Reel:
0.14-0.5: 11.1536
0.5-1.5: 11.1537
1.5-2.5: 11.1538



MATING COMPONENTS

HD 80 Plugs & Receptacles fit into EPIC® HBE 32 Housings. A quick reference for the mating components is shown. Diagrams are located in the HBE Section of the catalog (Page 313). Please note that metric parts are available.

EPIC[®] CONNECTORS

HBE 32 Housings for HD 80 Inserts



DOUBLE LEVERS ON BASE



Position of Cable Entry	Size of Entry		Standard Grey Coating	
	PG	NPT	PG Part #	NPT Part #
Top Entry	21	3/4"	10.1330	10.1330 NP
	29	1"	10.1340	10.1340 NP
Side Entry	21	3/4"	10.1350	10.1350 NP
	29	1"	10.1360	10.1360 NP

Part #
10.1320



# of Entries	Size of Entry		Standard Grey Coating	
	PG	NPT	PG Part #	NPT Part #
2 Entries	29	1"	10.1380	10.1380 NP
1 Entry	29	1"	10.1370	10.1370 NP

Size of Entry		Standard Grey Coating	
PG	NPT	PG Part #	NPT Part #
21	3/4"	10.1390	10.1390
29	1"	10.1395	10.1395 NP

Dust cover with double lever bolts and attachment string for panel mount or surface mount base or cable coupler hood: 10.1420

DOUBLE LEVERS ON HOOD



Position of Cable Entry	Size of Entry		Standard Grey Coating	
	PG	NPT	PG Part #	NPT Part #
Top Entry	29	1"	70.2050	70.2050 NP
Side Entry	29	1"	10.1366	10.1366 NP

Part #
10.1323

Size of Entry		Standard Grey Coating	
PG	NPT	PG Part #	NPT Part #
29	1"	10.1373	10.1373 NP

EPIC® CONNECTORS

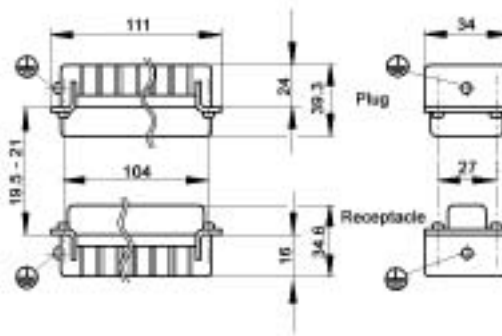
HD 128 Plugs & Receptacles



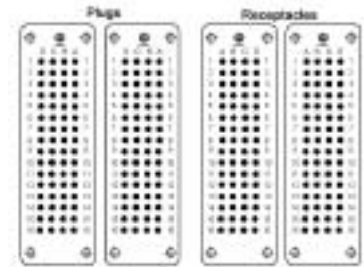
CRIMP TERMINATED: MACHINE CONTACT INSERTS



Contacts Sold Separately



View from cable side

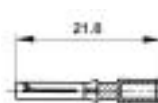


Plug	Receptacle
11.2720(2X)	11.2730 (2X)

All dimensions are in mm.

MACHINE CONTACTS: DIAMETER 1.6 MM

Cross section characteristic



Bags of 100

mm ²	AWG	Silver		Gold		Stripping Length (mm)	Cross Section Characteristic
		Pin	Socket	Pin	Socket		
0.14 - 0.37	26 - 22	13.1620	13.1630	13.1625	13.1635	8	1
0.5	20	13.1621	13.1631	13.1626	13.1636	8	2
0.75 - 1.0	18	13.1622	13.1632	13.1627	13.1637	8	3
1.5	16	13.1623	13.1633	13.1628	13.1638	8	4
2.5	14	13.1624	13.1634	13.1629	13.1639	5.8	5

Part number= 1 contact

CRIMP TOOLS



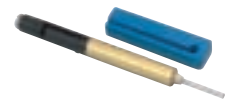
Crimp Tool
11.1470



Crimp Dies
11.1471



Locator
11.1472



Removal Tool
11.1610

MATING COMPONENTS

HD 128 Plugs & Receptacles fit into EPIC® HBE 48 Housings. A quick reference for the mating components is shown. Diagrams are located in the HBE Section of the catalog (Page 317). Please note that metric parts are available.

EPIC® CONNECTORS

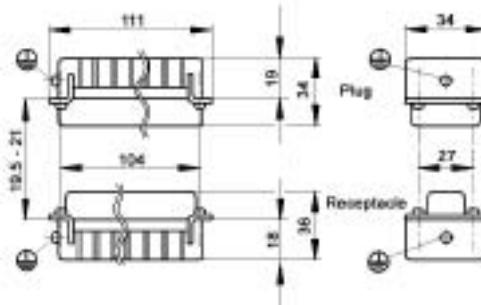
HD 128 Plugs & Receptacles



CRIMP TERMINATED: STAMPED & FORMED CONTACT INSERTS

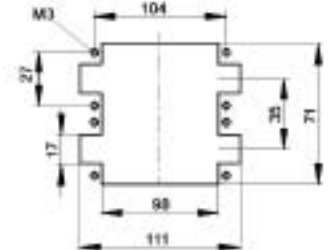


Contacts Sold Separately



Plug	Receptacle
11.2700 (2X)	11.2710 (2X)

Panel Cut-Out (Inserts Only)



All dimensions are in mm.

STAMPED & FORMED CONTACTS: DIAMETER 1.6 MM



mm ²	Stripping Length (mm)
0.14 - 0.5	2.5 - 0.5
0.5 - 1.5	3.5 - 0.5
1.5 - 2.5	3.5 - 0.5

		Bags of 100				Silver: Left Hand Feed Reel			
mm ²	AWG	Silver		Gold		Reel of 100		Reel of 200	
		Pin	Socket	Pin	Socket	Pin	Socket	Pin	Socket
0.14 - 0.5	26 - 20	11.2411	11.2311	11.2431	11.2331	-	-	11.2407	11.2307
0.5 - 1.5	20 - 16	11.2210	11.2361	11.2213	11.2381	-	-	11.2207	11.2357
1.5 - 2.5	16 - 14	11.2235	11.2285	-	-	11.2230	11.2280	-	-

		Reel of 2000: Right Hand Feed				Reel of 2000: Left Hand Feed			
mm ²	AWG	Silver		Gold		Silver		Gold	
		Pin	Socket	Pin	Socket	Pin	Socket	Pin	Socket
0.14 - 0.5	26 - 20	11.2400	11.2300	-	-	11.2404	11.2304	11.2305	11.2405
0.5 - 1.5	20 - 16	11.2200	11.2350	11.2201	11.2352	11.2260	11.2265	-	-
1.5 - 2.5	16 - 14	-	-	-	-	11.2227	11.2277	-	-

Part number= 1 contact (bags) or 1 reel.

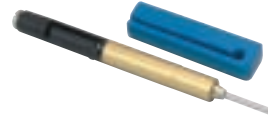
CRIMP TOOLS



Crimp Tool
11.1470



Locator
11.1473



Removal Tool: 11.1610



Crimp Tool for Reel
11.1535



Crimp Dies

0.14-0.5:	11.147170
0.5-1.5:	11.147180
1.5-2.5:	11.147190

Crimp Dies for Reel:

0.14-0.5:	11.1536
0.5-1.5:	11.1537
1.5-2.5:	11.1538



MATING COMPONENTS

HD 128 Plugs & Receptacles fit into EPIC® HBE 48 Housings. A quick reference for the mating components is shown. Diagrams are located in the HBE Section of the catalog (Page 317). Please note that metric parts are available.

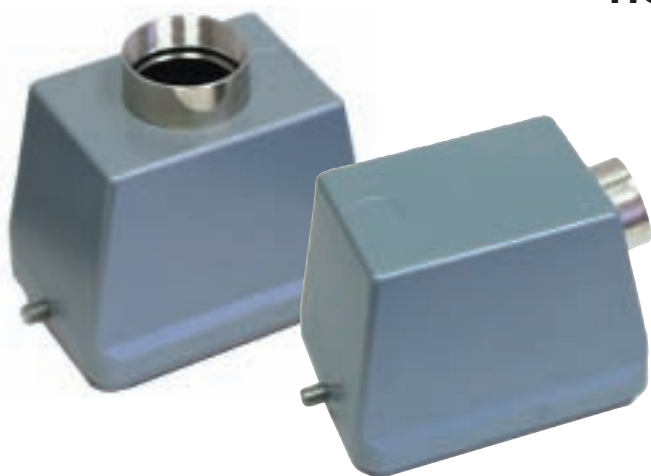
877-799-5277 • www.lappcanada.com

EPIC® CONNECTORS

HBE 48 Housings for HD 128 Inserts



HOODS



Position of Entry	Size of Entry		Standard Grey Coating	
	PG	NPT	PG Part #	NPT Part #
Top Entry	29	1"	10.1550	10.1550 NP
	36	1 1/4"	10.1560	10.1560 NP
	42	-	10.1570	-
Side Entry	29	1"	10.1580	10.1580 NP
	36	1 1/4"	10.1590	10.1590 NP
	42	-	10.1600	-

PANEL MOUNT BASES



Without Dust Cover	With Dust Cover with hold down screws and no dust cover bolts	With Dust Cover with hold down screws and dust cover bolts
10.1610	10.1520	10.1525

SURFACE MOUNT BASES



# of Entries	Size of Entry		Standard Grey Coating	
	PG	NPT	PG Part #	NPT Part #
2 Entries	29	1"	10.1660	10.1660 NP
	36	1 1/4"	10.1661	10.1661 NP
1 Entry	29	1"	10.1650	10.1650 NP
	36	1 1/4"	10.1651	10.1651 NP
2 Entries with dust cover	29	1"	10.1680	10.1680 NP
	36	1 1/4"	10.1681	10.1681 NP
1 Entry with dust cover	29	1"	10.1670	10.1670 NP
	36	1 1/4"	10.1671	10.1671 NP